



Axial fans certified to EN12101-3:2002



## RANGE

315mm to 1400mm diameter

Long Cased or Short Cased Type manufactured from mild steel and hot dip galvanised to EN ISO 1461:1999 Cases flanged to ISO 6580.

## OPERATING TEMPERATURE

F300 Rating for 300°C for two hours duration and at 40° C for continuous operation.

## PERFORMANCE

Full details are available on our fan selection software.

## IMPELLERS

High efficiency aluminium aerofoil type, balanced to ISO14694:2003

## GUARDS

Inlet or outlet wire guards can be supplied for all sizes.

## MOTORS

High temperature rated with Class H insulation, IP55, conforming to IEC60034-1. With flying lead (normally extended to duct terminal box).

## CERTIFICATION

Fully certified to EN12101-3:2002

for smoke and non-smoke reservoir.

Certificate number 0086-CPD-493412

Manufacturing FPC EN12101-3/ISO9001:2008

## MOUNTING

All units are suitable for internal or external operation at any installed angle.

## OPERATING TEMPERATURES

A full range of ancillary equipment is available for noise and vibration isolation plus non-return dampers for run/idle fans.

## APPLICATIONS

- Shopping Malls
- Car Parks
- Office Developments
- Factory Developments
- Schools
- Universities
- Sports Arenas/Stadia
- Duct Mounted
- Wall Mounted
- Roof Mounted

We also manufacture an extensive range of fans for smoke pressurisation.



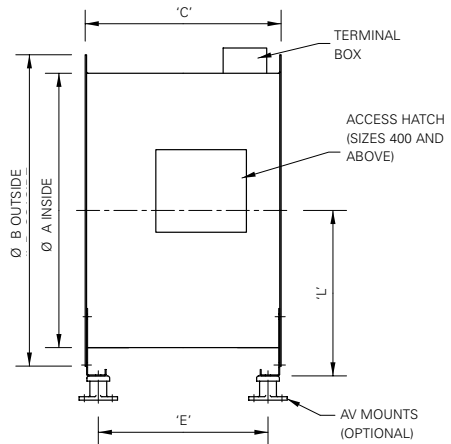
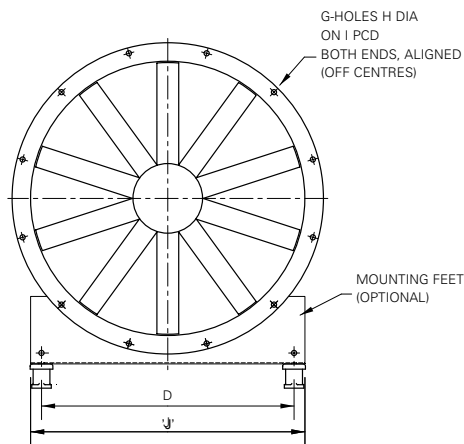
Picture courtesy of BSRIA

The high temperature re-circulating gas rig maintains a constant elevated temperature for the duration of the test. BSRIA is a UKAS Accredited facility testing to EN 12101-3.

Typical roof installation of Long Cased Fan with Outlet Hood with Bird Guard.



Long Cased Fan arrangement with mounting feet and anti-vibration mounts.



**Dimensions in mm**

A	B	C	D	E	G	H	I	J	L
315	375	350	265	300	8	10	355	315	200
400	475	450	350	400	8	12	450	400	245
500	585	500	450	440	12	12	560	500	315
560	645	500	510	441	12	12	620	560	355
630	715	500	580	440	12	12	690	630	380
710	795	650	640	590	16	12	770	710	420
800	885	650	730	575	16	12	860	800	470
900	1000	650	800	575	16	15	970	900	530
1000	1100	800	900	730	16	15	1070	1000	580
1120	1220	800	1020	730	20	15	1190	1120	670
1250	1350	800	1150	730	20	15	1320	1250	735

**The London Fan Company Ltd**  
75-81 Stirling Road  
London W3 8DJ

+44 (0)20 8992 6923  
+44 (0)20 8992 6928  
sales@londonfan.co.uk

[www.londonfan.co.uk](http://www.londonfan.co.uk)

Manufacturers of Breeza Fans  
& Breezax Impellers