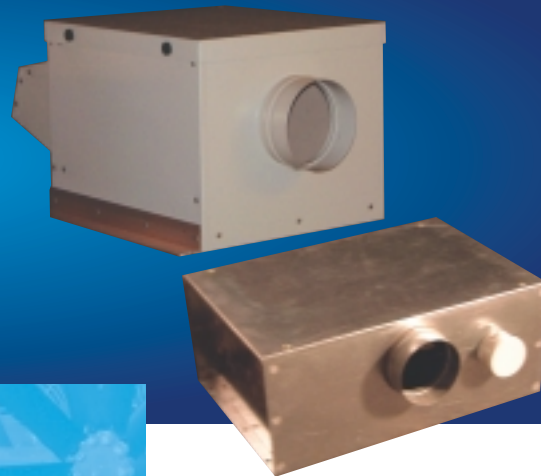


TWIN FANS DIRECT DRIVE

Internal or External/Roof mounted

Superior quality fan units designed for guaranteed standby ventilation for toilets, plant rooms or other areas where the failsafe extract of contaminated air is required.



INTERNAL UNITS TYPE LFT

For duct mounting with spigot connection on inlet and outlet and single skinned galvanised sheet steel casing.

EXTERNAL UNITS TYPE LFTR

For roof mounting with spigot connection on inlet and weatherproof discharge cowl with integral bird mesh and single skinned Plastisol (plastic coated steel) casing. Bottom inlet is also available on this model.

SIZE RANGE

Duct/spigot size connections 125mm to 500mm diameter.

PERFORMANCE

Full details available on our fan selection programme.

IMPELLERS

Two DIDW (double inlet double width) forward curved centrifugal type.

MOTORS

Comply with ISO standards. They are fitted with sealed for life ball bearings.

PRODUCT RANGE

- Long Cased Axial
- Bifurcated Axial
- Plate/Short Cased Axial
- Axial Impellers
- Smoke Extract
- Boxed Centrifugal
- Propeller
- Flameproof (Hazardous Area)
- Roof Mounted
- Portable

We can also design and manufacture fans to suit non standard or special applications

CASES/FINISH

Single skinned in galvanised sheet steel (internal units) or Plastisol (plastic coated steel – external units).

All units have removable lid sealed with a neoprene gasket.

Powder coated paint finish (to any BS or RAL number) available on all models.

OPERATING TEMPERATURE

From -15 to +40°C as standard, fans for operation beyond these limits are also available.

INSULATION (optional)

25mm acoustic foam lining (50mm available for additional noise attenuation).

AUTO CHANGE OVER

Control panels are available for change over on either electrical failure or airflow failure. Can also be supplied for fan duty share, and with volt free contacts for remote operation. Special units available with PIR sensors and speed control.

ANCILLARIES

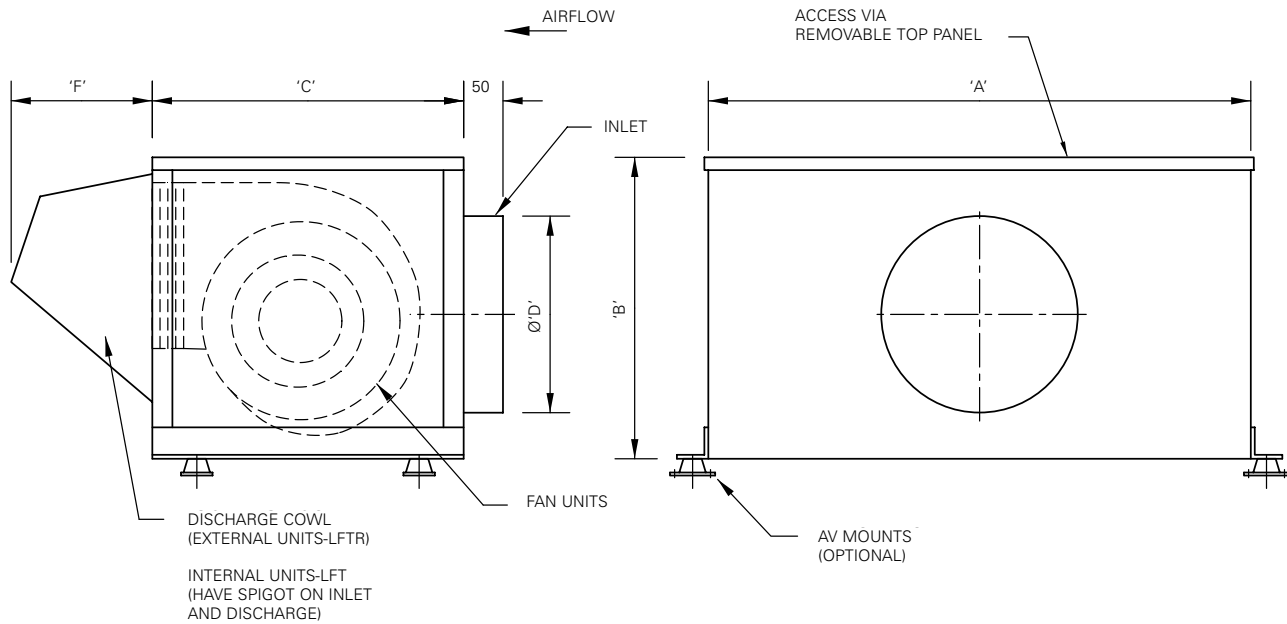
All fans can be offered with attenuators, flexible connectors, and anti-vibration mountings.

Twin Fan Direct Drive Performance Data

Fan Code	rpm	Airflow m ³ /s @ Static Pressure Pa										Motor kW	FLC Amps	SC Amps	dB(A) @3m		
		0	25	50	75	100	125	150	200	250	300					350	550
LFT125	1340	0.053	0.051	0.046	0.043	0.037	0.032	0.025	0.005					0.015	0.75	4.13	39
LFT150	1340	0.053	0.051	0.046	0.043	0.037	0.032	0.025	0.005					0.015	0.75	4.13	41
LFT200	1375	0.139	0.127	0.113	0.093	0.07	0.036							0.022	0.64	3.52	37
LFT250	1360	0.256	0.242	0.228	0.211	0.19	0.17	0.145	0.05					0.073	1.82	10.01	43
LFT315	1370	0.444	0.43	0.398	0.388	0.367	0.35	0.32	0.268	0.153				0.15	2.00	11.00	50
LFT355(A)	1100			0.425	0.42	0.412	0.4	0.388	0.353	0.313	0.125			0.373	2.00	11.00	55
LFT355(B)	1250			0.575	0.569	0.56	0.551	0.54	0.491	0.45	0.376	0.175		0.373	2.85	15.68	55
LFT355(C)	1350			0.75	0.74	0.725	0.712	0.69	0.655	0.605	0.54	0.4		0.373	3.85	21.18	58
LFT400	1350			0.81	0.8	0.79	0.78	0.77	0.73	0.66				0.55	3.80	20.90	57
LFT450	1350			0.99	0.98	0.975	0.965	0.945	0.9	0.82	0.675			0.55	4.90	26.40	59
LFT500	1300					1.11	1.1	1.09	1.07	1.04	0.996	0.89		0.55	6.85	37.68	60
LFT500/3	1410			1.79	1.75	1.71	1.69	1.68	1.6	1.55	1.5	1.44	1	1.5	5.00	25.00	60

dB(A) values are average spherical free field for comparison only, shown for acoustically lined units, at 3.0m distance.
The full range of performance and sound data is available on our fan selection software.

All units 240/1/50 supply
except 500/3 = 415/3/50



Dimensions in mm

Model	A	B	C	D	F	Approx wt
125	575	238	400	125	200	25kg
150	575	238	400	150	200	25kg
200	800	275	450	200	200	32kg
250	800	425	550	250	200	38kg
315	1000	450	650	315	200	44kg
355	1000	475	650	350	250	64kg
400	1050	475	650	400	250	70kg
450	1150	475	650	450	250	70kg
500	1250	525	700	500	250	98kg

The London Fan Company Ltd
75-81 Stirling Road
London W3 8DJ

t +44 (0)20 8992 6923
f +44 (0)20 8992 6928
e sales@londonfan.co.uk

www.londonfan.co.uk

Manufacturers of Breeza Fans
& Breezax Impellers