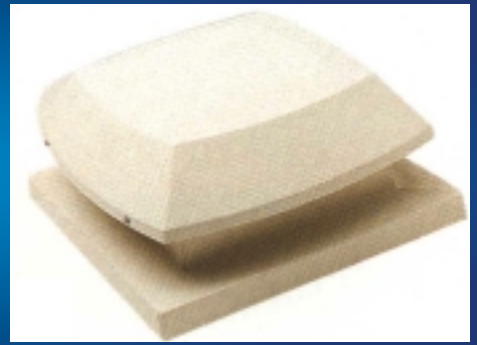


High quality roof mounted fans

constructed in glass fibre for durability



SIZE RANGE

300mm to 760mm impeller diameter.

PERFORMANCE

Ranging from 0.2 to 4.6 m³/s - full details are available on our fan selection software.

IMPELLERS

All units are fitted with Breezax Impellers with GRP blades. Aluminium blades can be fitted if required.

COWLS / BASES

Low Profile (LP) or Vertical Jet (VJ) cowls are available, mounted on curb, flat or moulded bases to match the roof corrugation.

MOTORS

Totally enclosed safe area type, enclosure IP54 or IP55, insulation Class F. Fitted with sealed for life ball bearings.

COLOUR

Standard colour is BS00A05 light grey. Other colours can be supplied to match the building colour.

ELECTRICAL SUPPLY

110V - 120V 1 phase

220V - 240V 1 phase

380V - 460V 3 phase

50 or 60 Hz

MOUNTING & AIRFLOW

Units are weatherproof up to an angle of 30°. The correct orientation of VJ units is required to maintain the balanced opening of the shutters.

ANCILLARIES

Aluminium shutters and bird guards can be supplied with LP type units if required. VJ units have shutters fitted as standard.

OPERATING TEMPERATURES

From -20°C to +50°C as standard; fans for operation beyond these limits are also available.

SPEED CONTROL

Most units are suitable for speed control. Care must be taken to avoid reducing the fan speed when shutters are fitted. Consult our Sales Office for more information.

PRODUCT RANGE

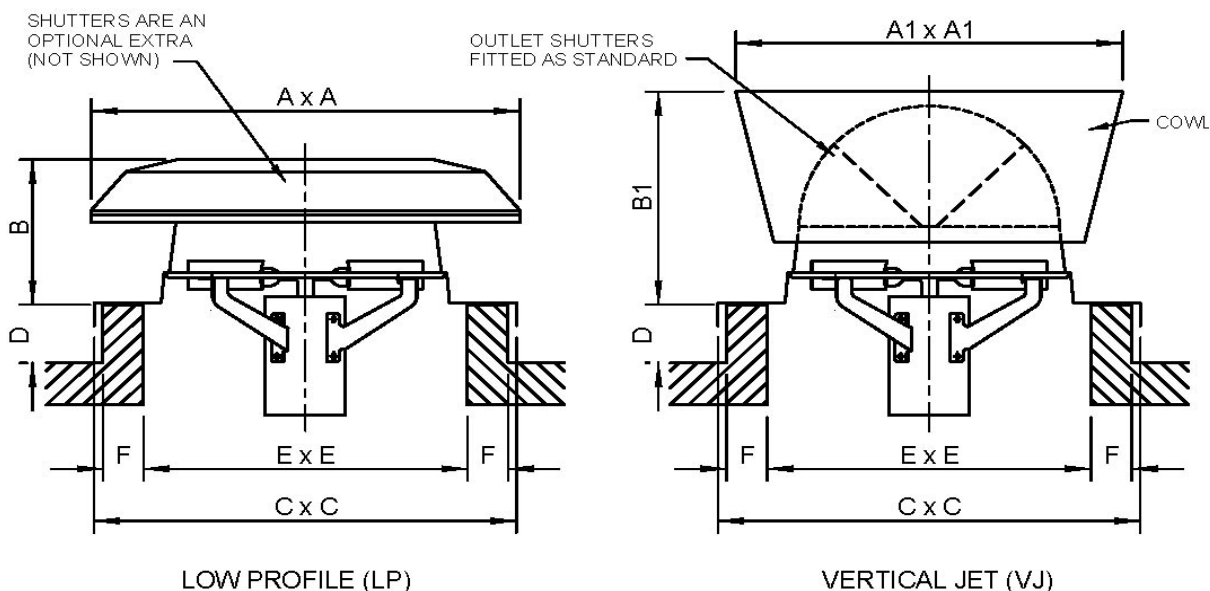
- Long Cased Axial
- Bifurcated Axial
- Plate or Short Cased Axial
- Axial Impellers
- Smoke Extract
- Boxed Centrifugal
- Propeller
- Flameproof (Hazardous Area)
- Roof Mounted
- Portable

We can also design and manufacture fans to suit non standard or special applications.

Safe Area Roof Extract Fans - Performance Data

	Fan Ref	rpm	Airflow m³/s @ Static Pressure Pa					dB(A) @3m	240/1/50			415/3/50		
			0 Pa	12.5	25	37.5	50		Motor kW	FLC Amps	SC Amps	Motor kW	FLC Amps	SC Amps
Type LP	LPC315 4 Pole	1400	0.43	0.40	0.37	0.31	0.27	57	0.1	0.80	2.00	0.1	0.34	1.40
	LPC380 4 Pole	1400	0.81	0.79	0.75	0.71	0.62	62	0.1	0.80	2.00	0.1	0.34	1.40
	LPC450 6 Pole	900	0.92	0.89	0.87	0.74	0.58	56	0.19	1.50	4.50	0.19	0.90	1.90
	LPC450 4 Pole	1400	1.39	1.37	1.34	1.29	1.22	66	0.5	3.00	9.50	0.5	1.20	3.90
	LPC610 8 Pole	700	1.69	1.56	1.41	1.19	0.88	59	0.18	1.60	2.70	0.18	1.00	2.80
	LPC610 6 Pole	900	2.22	2.17	2.12	2.08	2.03	65	0.39	2.70	7.60	0.39	1.50	3.60
	LPC760 8 Pole	700	3.35	3.08	2.93	2.74	2.56	66	n/a	n/a	n/a	0.45	2.20	3.40
	LPC760 6 Pole	900	4.32	3.95	3.76	3.53	3.29	72	n/a	n/a	n/a	0.67	2.20	5.00
Type VJ	VJC315 4 Pole	1400	0.46	0.42	0.40	0.33	0.29	59	0.1	0.80	2.00	0.1	0.34	1.40
	VJC380 4 Pole	1400	0.86	0.84	0.80	0.75	0.66	64	0.1	0.80	2.00	0.1	0.34	1.40
	VJC450 6 Pole	900	0.98	0.95	0.93	0.78	0.62	58	0.19	1.50	4.50	0.19	0.90	1.90
	VJC450 4 Pole	1400	1.48	1.46	1.42	1.37	1.30	68	0.5	3.00	9.50	0.5	1.20	3.90
	VJC610 8 Pole	700	1.80	1.66	1.49	1.26	0.94	61	0.18	1.60	2.70	0.18	1.00	2.80
	VJC610 6 Pole	900	2.36	2.31	2.26	2.20	2.16	67	0.39	2.70	7.60	0.39	1.50	3.60
	VJC760 8 Pole	700	3.12	2.92	2.72	2.50	2.23	68	n/a	n/a	n/a	0.45	2.20	3.40
	VJC760 6 Pole	900	4.00	3.76	3.50	3.20	2.90	74	n/a	n/a	n/a	0.67	2.20	5.00

Please contact our Sales Office for 1000mm size performance data.



	Fan Ref	A	B	C	D	E	F	kg
Low Profile	LPC315	555	250	520	150	400	50	19
	LPC380	635	280	620	125	480	50	21
	LPC450	864	310	825	125	650	75	35
	LPC610	1115	530	1010	150	825	75	56
	LPC760	1410	650	1125	150	950	75	79
	LPC1000	1370	400	1390	150	1200	75	TBA

	Fan Ref	A1	B1	C	D	E	F	kg
Vertical Jet	VJC315	635	405	620	125	480	50	22
	VJC380	635	405	620	125	480	50	24
	VJC450	864	510	825	125	650	75	39
	VJC610	1092	610	925	125	750	75	62
	VJC760	1120	760	1115	125	925	75	87

The London Fan Company Ltd reserves the right to revise product specification and information without prior notice.