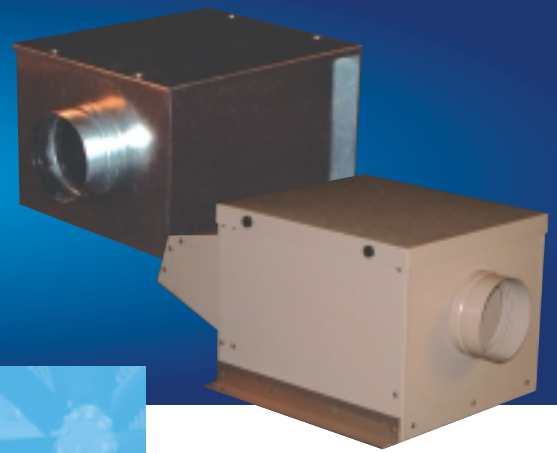


BOXED CENTRIFUGAL FANS

Internal or External/Roof mounted

Superior quality fan units designed for general ventilation where a single centrifugal fan is more suited.



INTERNAL UNITS TYPE LFS

For duct mounting with spigot connection on inlet and outlet and single skinned galvanised sheet steel casing.

EXTERNAL UNITS TYPE LFSR

For roof mounting with spigot connection on inlet and weatherproof discharge cowl with integral bird mesh and single skinned Plastisol (plastic coated steel) casing. Bottom inlet is also available on this model.

SIZE RANGE

Duct/spigot size connections 125mm to 500mm diameter.

PERFORMANCE

Full details available on our fan selection programme.

IMPELLERS

One DIDW (double inlet double width) forward curved centrifugal type.

MOTORS

Comply with ISO standards. They are fitted with sealed for life ball bearings.

CASES/FINISH

Single skinned in galvanised sheet steel (internal units) or Plastisol (plastic coated steel – external units).

All units have removable lid sealed with a neoprene gasket.

Powder coated paint finish (to any BS or RAL number) available on all models.

OPERATING TEMPERATURE

From -15 to +40°C as standard, fans for operation beyond these limits are also available.

INSULATION (optional)

25mm acoustic foam lining (50mm available for additional noise attenuation).

ANCILLARIES

All fans can be offered with attenuators, flexible connectors, and anti-vibration mountings.

PRODUCT RANGE

- Long Cased Axial
- Bifurcated Axial
- Plate or Short Cased Axial
- Axial Impellers
- Smoke Extract
- Boxed Centrifugal
- Propeller
- Flameproof (Hazardous Area)
- Roof Mounted
- Portable

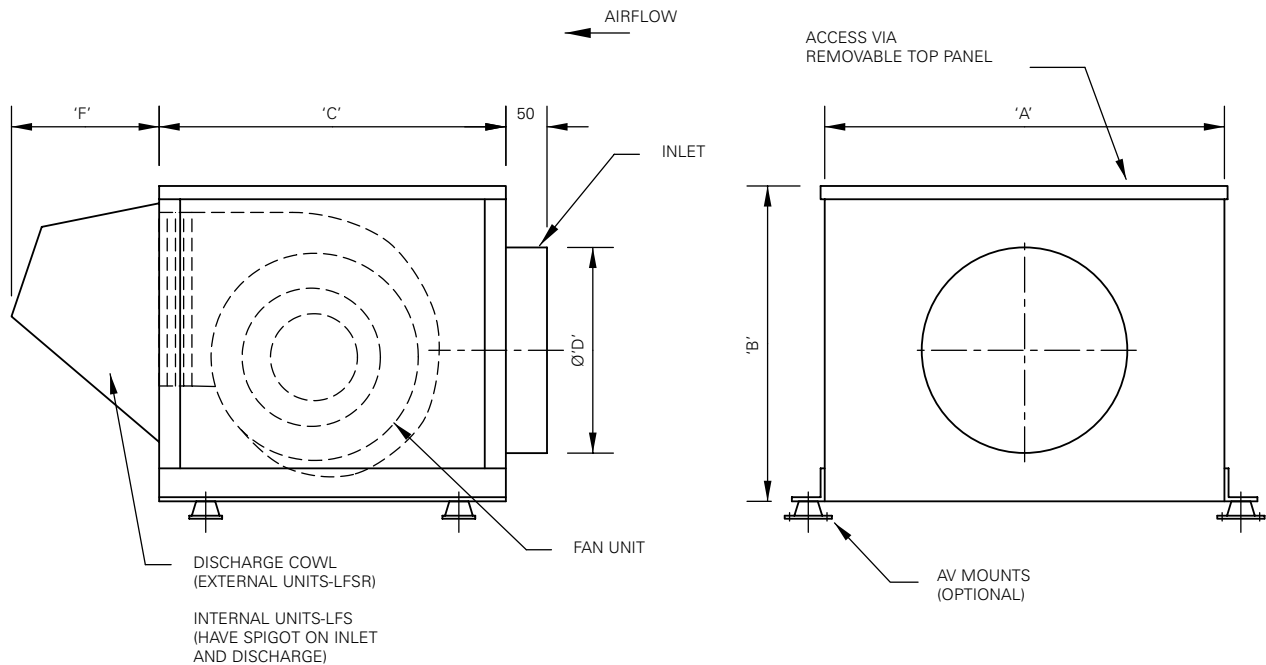
We can also design and manufacture fans to suit non standard or special applications

Boxed Centrifugal Fan Performance Data

Fan Code	rpm	Airflow m ³ /s @ Static Pressure Pa											Motor kW	FLC Amps	SC Amps	dB(A) @3m	
		0	25	50	75	100	125	150	200	250	300	350					550
LFS125	1340	0.053	0.051	0.046	0.043	0.037	0.032	0.025	0.005					0.015	0.75	4.13	39
LFS150	1340	0.053	0.051	0.046	0.043	0.037	0.032	0.025	0.005					0.015	0.75	4.13	41
LFS200	1375	0.139	0.127	0.113	0.093	0.07	0.036							0.022	0.64	3.52	37
LFS250	1360	0.256	0.242	0.228	0.211	0.19	0.17	0.145	0.05					0.073	1.82	10.01	43
LFS315	1370	0.444	0.43	0.398	0.388	0.367	0.35	0.32	0.268	0.153				0.15	2.00	11.00	50
LFS355(A)	1100			0.425	0.42	0.412	0.4	0.388	0.353	0.313	0.125			0.373	2.00	11.00	55
LFS355(B)	1250			0.575	0.569	0.56	0.551	0.54	0.491	0.45	0.376	0.175		0.373	2.85	15.68	55
LFS355(C)	1350			0.75	0.74	0.725	0.712	0.69	0.655	0.605	0.54	0.4		0.373	3.85	21.18	58
LFS400	1350			0.81	0.8	0.79	0.78	0.77	0.73	0.66				0.55	3.80	20.90	57
LFS450	1350			0.99	0.98	0.975	0.965	0.945	0.9	0.82	0.675			0.55	4.90	26.40	59
LFS500	1300					1.11	1.1	1.09	1.07	1.04	0.996	0.89		0.55	6.85	37.68	60
LFS500/3	1410			1.79	1.75	1.71	1.69	1.68	1.6	1.55	1.5	1.44	1	1.5	5.00	25.00	60

dB(A) values are average spherical free field for comparison only, shown for acoustically lined units, at 3.0m distance. The full range of performance and sound data is available on our fan selection software.

All units 240/150 supply except 500/3 = 415/3/50



Dimensions in mm

Model	A	B	C	D	F	Approx wt
125	325	240	300	125	200	13kg
150	325	240	375	150	200	14kg
200	425	300	375	200	200	20kg
250	425	375	425	250	200	24kg
315	575	425	500	315	200	29kg
355	550	475	550	350	250	32kg
400	700	475	550	400	250	38kg
450	700	475	550	450	250	40kg
500	750	525	600	500	250	44kg

The London Fan Company Ltd
75-81 Stirling Road
London W3 8DJ

t +44 (0)20 8992 6923
f +44 (0)20 8992 6928
e sales@londonfan.co.uk

www.londonfan.co.uk

Manufacturers of Breeza Fans
& Breezax Impellers